

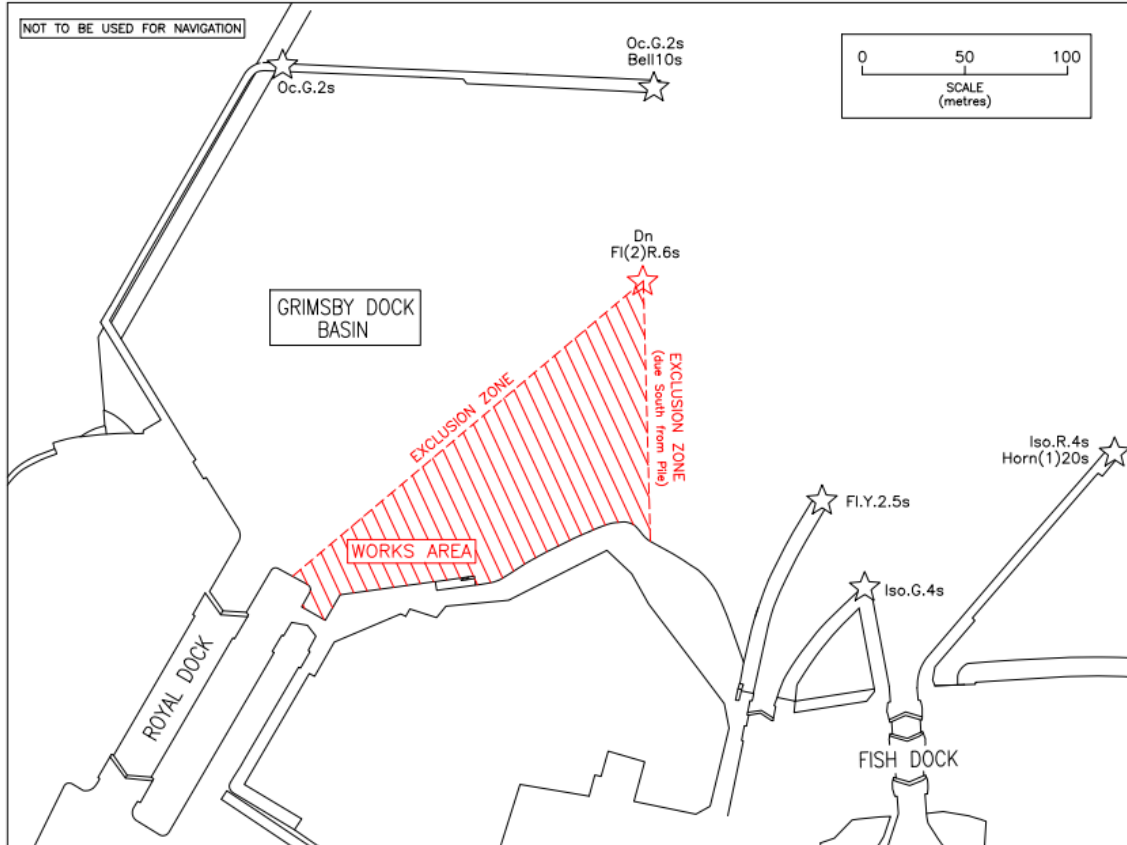
NOTICE TO MARINERS

No. H. 161/2021

RIVER HUMBER GRIMSBY ROYAL DOCK BASIN

CONSTRUCTION OF NEW BOARDING STRUCTURES IN VICINITY OF EAST SIDE MOUSEHOLE

NOTICE IS HEREBY GIVEN that on Tuesday 9th November 2021 (or as soon after as circumstances permit) and continuing for a period of approximately nine weeks, scheduled installation works will commence in the area around the mousehole to the east of the Grimsby Royal Dock entrance as per the chartlet below:



The workboats 'REBECCA-M', 'MORTLIFT' and 'ABIGAIL' will be engaged in the works and will exhibit the lights and shapes prescribed by the International Regulations for Preventing Collisions at Sea and will maintain a listening watch on VHF channels 74 and 12.

MARINERS ARE PROHIBITED from using the mousehole, slipway, and associated ladders to the east of Grimsby Royal Dock entrance during the planned works with the exception of tugs engaged in assisting vessels to or from the dock.

MARINERS ARE REQUIRED to pass at slow speed to avoid creating a wash when works are being carried out and to contact Grimsby Dock on VHF channel 74 for any instructions.

**CAPT. A. FIRMAN.
HARBOUR MASTER, HUMBER**

8th November 2021

THE INTERNET

In order to widen communication between ABP Humber Estuary Services and those with an interest in the estuary, you are invited to visit our website which carries a wide range of information, including current live weather and Buoy positions, charts, tidal information and copies of this and other Notice to Mariners.