
NOTICE TO MARINERS

No. H. 148/2016

HUMBER APPROACHES

BATHYMETRIC SURVEY WORKS

NOTICE IS HEREBY GIVEN that on 02 December 2016 (or as soon as circumstances permit) and continuing for a period of approximately four days a Bathymetry and Side Scan Sonar Survey will take place across the Humber approaches including the New Sand Hole Traffic Separation Scheme.

The survey is being carried out on a 24 hour basis (weather permitting) by the offshore survey and support vessel "**M/V GEO OCEAN II**" (LOA 39.90m), within the survey area shown on the diagram overleaf. Whilst surveying the vessel will be restricted in her ability to manoeuvre, but will liaise with VTS prior to entering the TSS. The vessels will exhibit the lights and shapes prescribed by the International Regulations for Preventing Collisions at sea and will maintain a listening watch on VHF Channels 16 and 14.

VTS Humber will be advised of the current operating area. This information will be promulgated to mariners in the 2 hourly Marine and Safety Information Broadcast.

MARINERS ARE WARNED to navigate with caution in this area.

(See over for diagram)

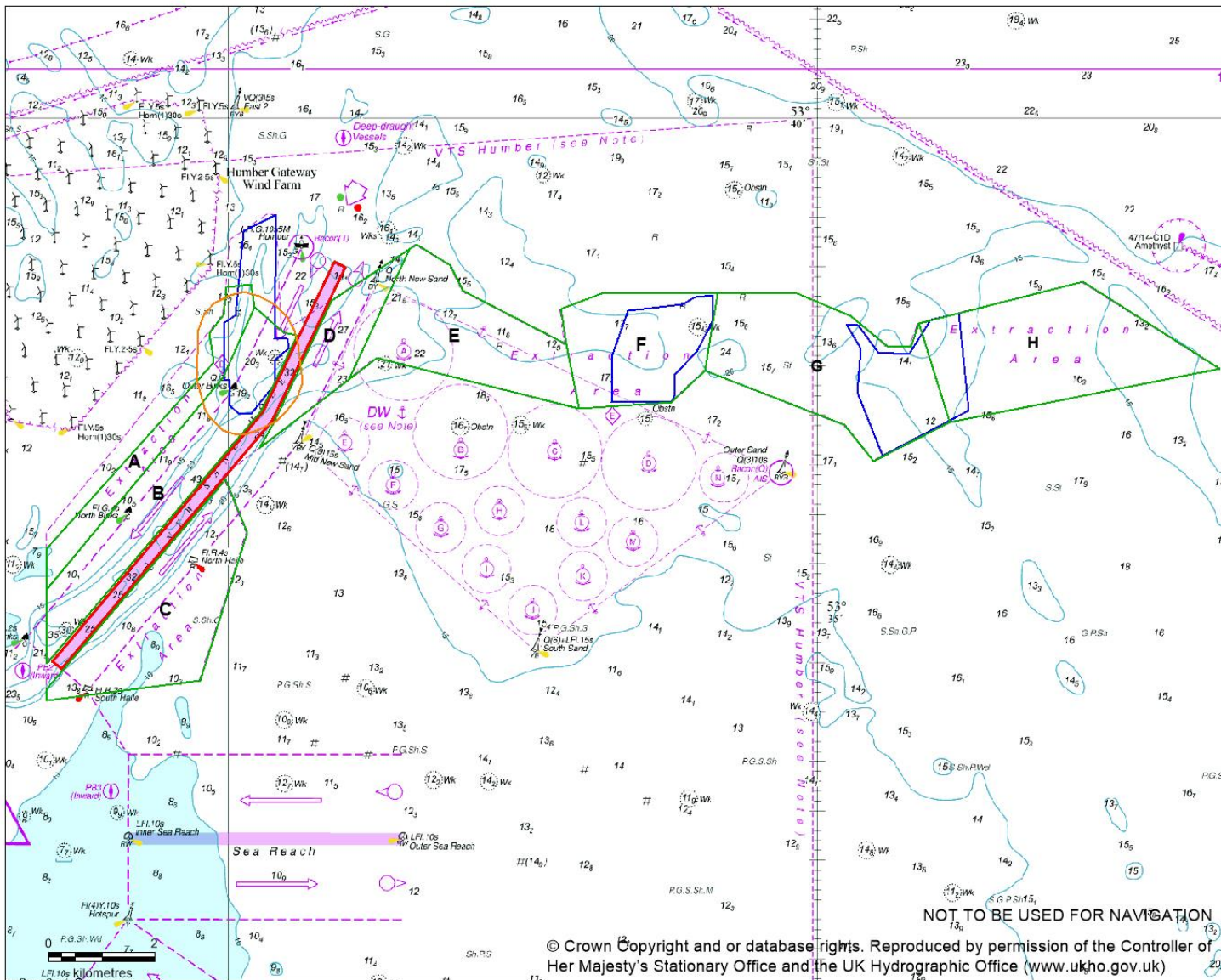
**CAPT. A. FIRMAN
HARBOUR MASTER, HUMBER**

01 December 2016

THE INTERNET

In order to widen communication between ABP Humber Estuary Services and those with an interest in the estuary, you are invited to visit our website which carries a wide range of information, including current live weather and Buoy positions, charts, tidal information and copies of this and other Notice to Mariners.

www.humber.com



CEMEX

TITLE:
AREA 514 DREDGING ZONES/SURVEY AREA

LEGEND:

- DREDGING ZONES
- TRAFFIC SEPARATION ZONE
- PREVIOUS LICENCE AREAS
- SURVEY AREA

ZONE G: Not currently used

ZONE H: Not currently used

PROJECTION:
WGS84

DRAWN BY:
SLB

DATE:
15/11/2016