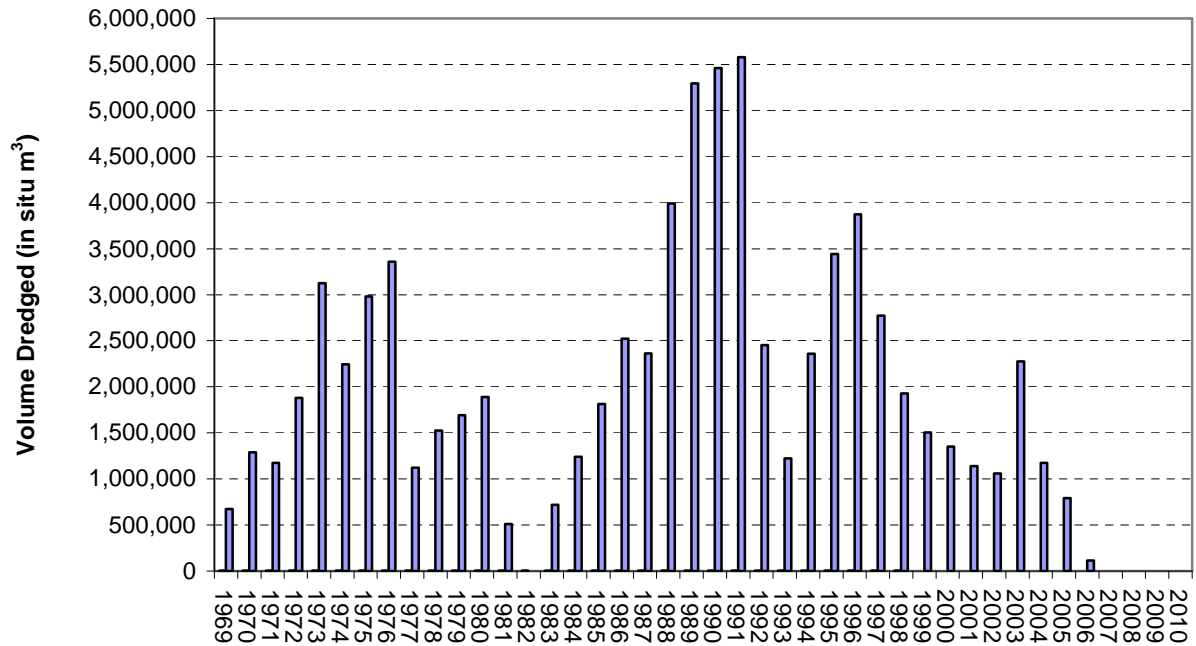


# Sunk Dredged Channel 2010

The following charts indicate the dredged volumes since 1969 to the present, the Least Available depths in the SDC during 2010 and dredged volumes in other parts of the Humber throughout 2010.

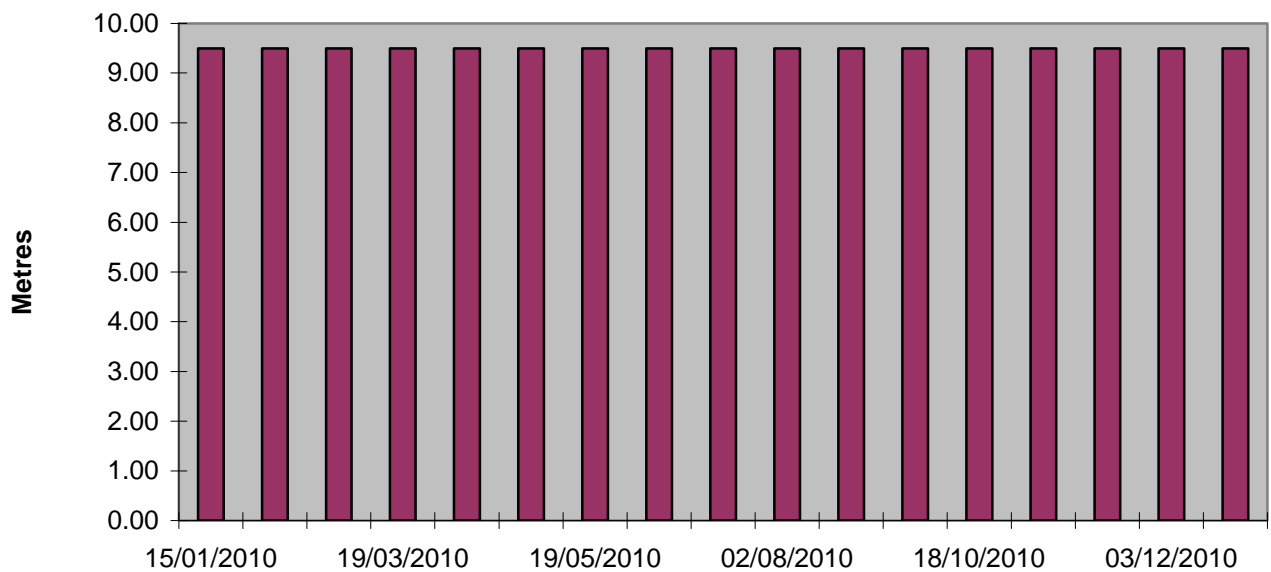
## Sunk Dredged Channel Dredging

Volume Dredged between 1969 to 2010



## Sunk Dredged Channel

Least Available Depths 2010



## Humber Dredging Summary 2010

Humber Dredging Summary 2010	TOTAL		TOTAL
	Time (hrs)	Volume (m3)	Tonnes
<b>Location</b>			
Albert Entrance	120.8	19,480	25,324
Albert Dock	55.4	9,757	12,684
Alex Entrance	80.9	84,780	110,215
Alex Dock	123.0	47,365	61,575
Ro-Ro Terminal	18.4	1,715	2,230
Queen Elizabeth Dock	0.0	0	0
KG Dock	380.0	85,094	110,622
KG Entrance	251.9	220,290	286,377
RT1	122.5	74,266	96,546
Saltend	254.7	177,054	230,170
Hull	2.1	1,229	1,598
Goole	32.0	4,288	5,575
Grimsby Alex	64.5	25,491	33,138
Grimsby Royal Basin	5.1	946	1,230
Grimsby Royal Dock	190.5	73,570	95,641
Grimsby Entrances	201.2	184,846	240,300
Grimsby Fish Dock	14.6	12,324	16,021
Grimsby Marina	0.0	0	0
Immingham Bellmouth	150.8	184,401	239,721
Immingham Dock	607.1	146,032	189,842
Immingham Gas Terminal	82.9	32,061	41,679
Immingham West Jetty Ext.	47.2	63,011	81,914
Humber International Terminal	342.2	284,900	370,370
Immingham Bulk Terminal	355.5	304,218	395,484
Immingham Outer Harbour	1,440.7	1,948,117	2,532,553
Sunk Dredge Channel	0.0	0	0
<b>Total</b>	<b>4,944.0</b>	<b>3,985,236</b>	<b>5,180,807</b>
South Killingholme Oil Jetty (11A deposit)	18.6	10,315	13,410
	<b>4,962.6</b>	<b>3,995,551</b>	<b>5,194,216</b>